

Our Mission

Bioimaging provides the means to place genomic and proteomic information in a cellular or tissue context. The **BioVis Platform** provides a unique combination of technology and know-how for multimodal biological visualization at the tissue, cell, and sub-cellular levels, including supporting analytical and preparative technologies.

We provide access to analytical techniques covering light and electron microscopy, as well as flow cytometry. We offer advice regarding methods and visualization-related problems as well as fee-based access to state-of-the-art instruments.

We aim to help researchers coming from academic and non-academic areas to cover various perspectives and scales of visualization that have to be addressed during a research project.



UPPSALA
UNIVERSITET

Head of BioVis:

Dirk.Pacholsky@igp.uu.se

Microscopy:

Matyas.Molnar@igp.uu.se

Jeremy.Adler@igp.uu.se

Dirk.Pacholsky@igp.uu.se

Flow Cytometry:

Dirk.Pacholsky@igp.uu.se

Johan.Brannstrom@igp.uu.se

Electron Microscopy

Monika.Hodik@igp.uu.se

Karin.Staxang@igp.uu.se

For more information please
Visit our homepage or contact us.

www.biovis.uu.se

BioVis Platform, Rudbeck Laboratory,
Science Park, Hammaskjöldsv 20,
751 85 Uppsala

Uppsala University
Platform for
Biological Visualization



Light & Electron Microscopy : Flow Cytometry : Image Analysis

Light Microscopy

Brightfield & Fluorescence
Confocal
Multiphoton
Lightsheet
Superresolution (SIM)

Flow Cytometry

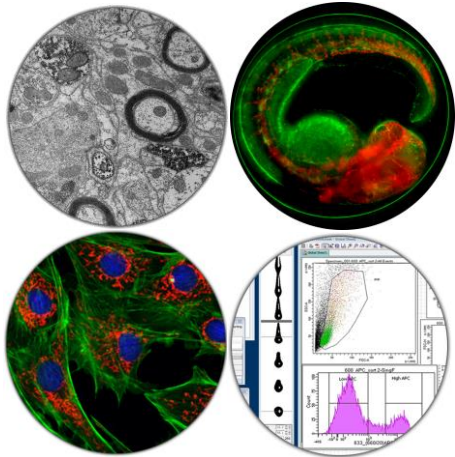
Flow Cytometry
Cell Sorting
Image Flow Cytometry

Electron Microscopy

Transmission Electron
Sample Preparation Lab



UPPSALA
UNIVERSITET



From centimeter to picometer in a flow

The BioVis Platform allows you to analyze your cell and tissue sample via different techniques. The Light microscopy and Electron microscopy node covers Imaging in the scale of cm to pm to let you visualize samples in 2, 3 or even 4 dimension (x,y,z and time) The Flow Cytometry node combines imaging and flow cytometry data and allows even to isolate and purify your cells of interest.

. **Zeiss LSM710 SIM** Superresolution / Confocal microscopy (λ 405, 488, 561, 633)

. **Zeiss Lightsheet Z.1** for whole mount imaging of fruitfly, zebrafish and mouse embryos and more for, 4D-imaging (λ 405, 488, 561, 633)

. **Zeiss LSM710 NLO** with QASAR detector and 3 NDD-T and NDD-R for Multiphoton deep tissue / intravital imaging and Confocal microscopy (λ 488, 561, 633, 690-1040)

. **Zeiss LSM700** confocal microscopy, ready for Live Cell Imaging, (λ 405, 488, 561, 633)

. **Zeiss Axioimager** Brightfield and Fluorescence

. **ZEISS SteREO V12** large sample preparation

. **TEM FEI Tecnai** Electron Microscope incl. Sample Preparation Laboratory

. Monthly courses

Image J

Instrument intros

. Annual courses

Methods for Cell Analysis (MCA)

Introduction to Image Analysis Softwares (IAS)

. **BD Fortessa** analytical Flow Cytometry (λ 355, 405, 488, 561, 638)

. **BEC Cytoflex S** analytical Flow Cytometry (λ 405, 488, 561, 638)

. **BD FACS Aria III** Flow Cytometry and Cell Sorting (λ 405, 488, 561, 633)

. **BD FACS Melody** Flow Cytometry and Cell Sorting (λ 405, 488, 561)

. **Amnis FlowSight** Imaging Flow Cytometry (λ 405, 488, 561, 642, 785)

. **Workstations Flow** Kaluza, DiVa, ModFit, IDEAS

. **Workstations Imaging** Imaris, Huygens, Image J

Equipment available at BioVis